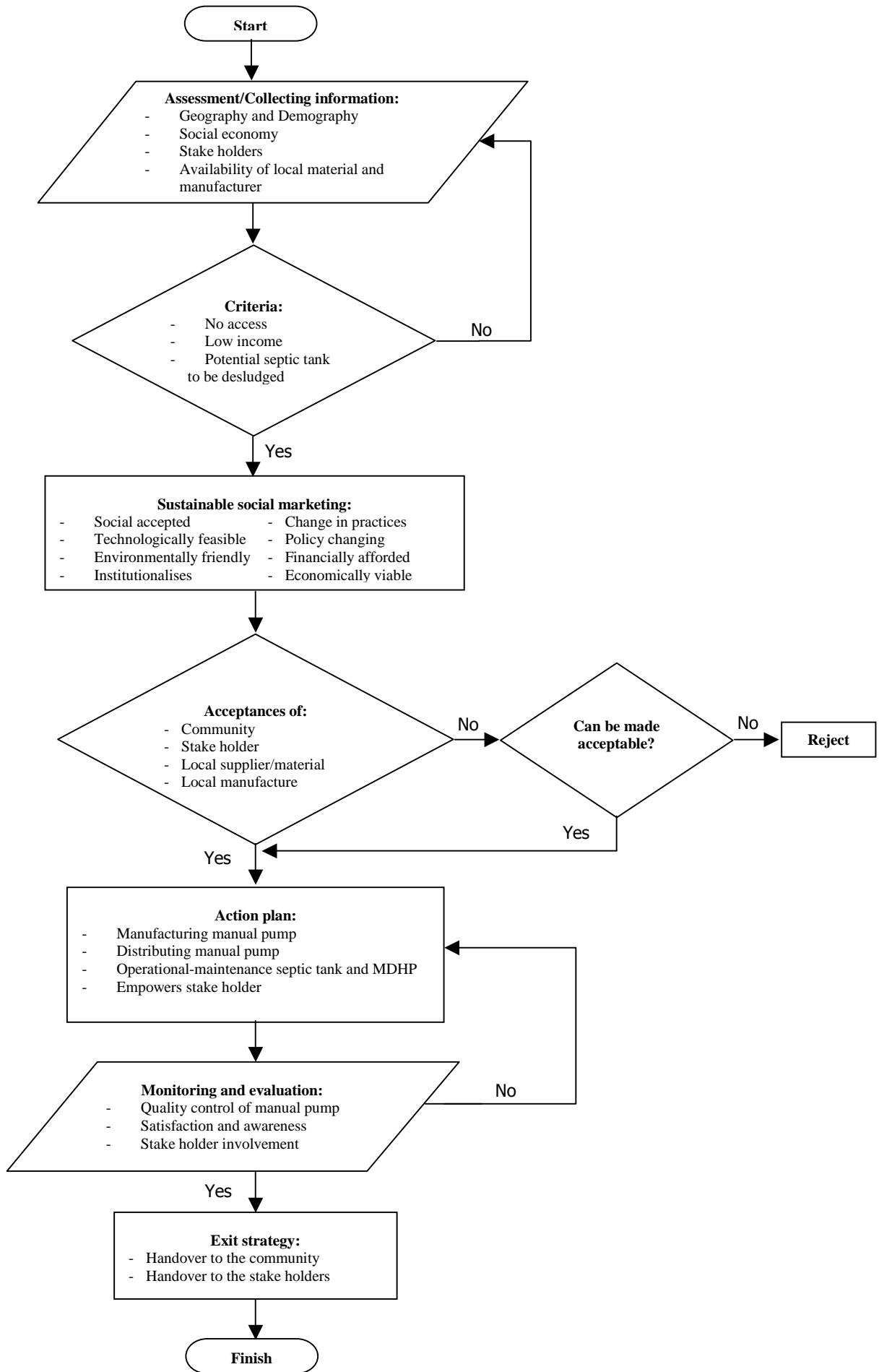


Activities and Ways of Working Manual Desludging Pump (MDHP):

Immediate Objectives		
<p>Manual Desludging Hand Pump (MDHP) is one of the means to desludge septic tank or other form of sludge containment such as cinclin. Many of septic tanks were built in remote areas where desludging services company is not available. Or the septic tanks were located in inaccessible areas. Although it's not a common way to desludge septic tank manually, an MDHP is one of the ways, which could respond to sludge collection problem effectively. There are 4(four) main concerns towards this manual hand pump practices. First is with regards to its environmental feasibility, secondly health& safety concern, thirdly its social acceptance and lastly is its technical feasibility.</p> <p>Ascertain the social acceptance in the target population and advocate local authorities to have a safe and sustainable sanitation services especially in rural context applying the proposed alternatives by collaborating effort with relevant institutions that working on the same agenda. e.g. the operation and maintenance of septic tank, the presence of a safe sludge disposal and the means for the sludge collection.</p>		
Activity	Ways of Working	
1. Assessment	Collecting information from stake holders	<ol style="list-style-type: none"> 1. Identification stake holder who have the same agenda on sewage and sullage management (local authority, Health centre, BRR, NGO's, INGO's, etc) 2. Meeting arrangement with stake holder 3. Collecting information files from stake holder about sewage management program 4. Identification of potential dumping site, location, number and type of septic tank 5. Develop a training on O & M of septic and manual desludging pump further and test PHP training sessions along with appropriate IEC materials
	Area identification	<ol style="list-style-type: none"> 1. Collecting information of demography and geography (population, access, space area, social economic, culture, etc) 2. Identification of potential manufacture and supplier
2. Implementation	Community meeting	<ol style="list-style-type: none"> 1. Community meeting arrangement together with stake holders 2. Community awareness of emptying the septic tank and other key public health concepts 3. Socialize of the purpose of manual pump by demonstration
	Manufacture and suppliers identification	Together with community and stake holders identification potential local manufacture and suppliers
	O & M manual pump and septic tank	Together with stake holders develop a training to the community on O & M of septic and manual desludging pump further and test PHP training sessions along with appropriate IEC materials
	Establish community committee for manual pump or Distribution System	<ol style="list-style-type: none"> 1. Together with community and stake holders establish small team who will be in charge on manual pump in those area so anyone able to use it 2. Alternatively, explore distribution systems (health centers, schools, community institutions)
	Manual pump manufacturing	Work through capable and competent manufacturers to produce the manual desludging pumps
	Collaboration with stake holder	<ol style="list-style-type: none"> 1. Together with stake holder produce and socialize manual desludging pump with minimum cost 2. Supporting and advocating stake holders on planning of sustainable sludge management 3. Explore subsidies and linkages between stakeholders, community, and manufacturers.
	Manual hand pump distributions	<ol style="list-style-type: none"> 1. Distributing manual pump to the committee at the community level 2. Distributing manual pump to the stake holder 3. Distributing manual pump to the manufacture as a sample
3. Monitoring & Evaluation	Manual pump quality control	<ol style="list-style-type: none"> 1. Make sure the manufacture make it in properly 2. Trial test each of manual pump before distribute 3. Community know how and where to develop manual pump
	Satisfaction	<ol style="list-style-type: none"> 1. Asking the community and stake holder the benefit of manual pump 2. Awareness from community of desludging septic tank 3. Number of septic tanks desludged 4. Community know how to use and maintenance manual pump
	Health and Environment Issues	<ol style="list-style-type: none"> 1. Selection of safe dumping site 2. No increase in diarrheal diseases 3. Continued latrine usage and no return to open defecation
	Stake holder involvement	<ol style="list-style-type: none"> 4. Participations of stake holder in socialise and manufacturing manual pump 5. Awareness from stake holder of sludge management
4. Exit strategies	Hand over to community committee	MoU or agreement to the committee of manual pump at community level to make sure those manual pump are sustainable
	Hand over to stake holder	MoU or agreement to the stake holders of manual to make sure those manual pump are sustainable



**Time schedule of
Manual Desludging Hand Pump (MDHP)**

Activity		I				II				III			
		1	2	3	4	1	2	3	4	1	2	3	4
1. Assessment	Collecting information from stake holders												
	Area identification	■											
2. Implementation	Community meeting	■	■	■	■								
	Manufacture and suppliers identification		■										
	O & M manual pump and septic tank			■	■	■							
	Establish community committee for manual pump	■	■	■	■								
	Manual pump manufacturing				■	■	■	■					
	Collaboration with stake holder	■	■			■	■			■	■		
	Manual hand pump distributions							■	■	■			
3. Monitoring & Evaluation	Manual pump quality control					■	■			■	■	■	■
	Satisfaction									■	■	■	■
	Stake holder involvement				■				■				■
4. Exit strategies	Hand over to community committee									■	■	■	
	Hand over to stake holder										■	■	■